



BOLDIMAGINATIVEINTIMATE

THE WOMAN WHO WENT TO SPACE AS A MAN

WRITTEN AND DIRECTED BY
MAUREEN HUSKEY
MUSIC BY YUVAL RON

FEATURING

Kamar Elliott, Anneliese Euler*, James Ferrero°, Emma Zakes Green,
Betsy Moore*, Nathan Nonhof, Robert Paterno°, Isabella Ramacciotti, Paula Rebelo°,
Megan Rippey°, Ashley Steed* & Alex Wells°*

Set Eli Smith **Lighting** Rose Malone **Sound** Martín Carrillo
Costumes Lena Sands **Music Direction** Richard An
Technical Direction Joe Herrera **Stage Management** Mary Losurdo-Holt
Fight Direction Edgar Landa* **Assistant Costume Design** Ashphord Jacoway
Dramaturgy Flor San Roman*

The performance will run 95 minutes with no intermission.

NOTE: Performance includes haze and flashing lights

* Member; Son of Semele Ensemble ° Appears courtesy of Actors' Equity Association.

Based on the biography: "James Tiptree Jr.: The Double Life of Alice B. Sheldon" by Julie Phillips
and "With Delicate Mad Hands" by James Tiptree Jr.

By Special arrangements with Macmillan Entertainment and Jeff Smith.

This production is presented under the auspices of the Actors' Equity Los Angeles Membership Company
Rule and made possible, in part, by the Los Angeles County Arts Commission and the City of Los Angeles,
Department of Cultural Affairs.



ABOUT ALICE



Alice Sheldon had many personas before becoming James Tiptree. She was a painter, worked for the C.I.A and the Pentagon, earned a Ph.D. in psychology and operated a chicken farm. One thing that remained constant was her love for science fiction and dreaming of the stars. Reflecting on the star system Sirius, she wrote: "Sirius, the magnificent, the great white-cold diamond blazing in cold space, the brightest star we see... [it's] fantastic rush of energy was descending on me."

Born in 1915 to the Chicago socialites Herbert Bradley, a lawyer and real estate investor, and Mary Hastings Bradley, an accomplished author, six year old Alice Bradley had already traveled to Africa and been called "the First White Child Ever Seen by the Pigmy Tribes" in *The New York Times*. She continued to go on expeditions to Africa with her parents until the age of 15 which resulted in experiences that marked her for life. As a 19-year-old debutante she eloped with a young man, William Davey. Their marriage ended in divorce six years later. Alice became a lieutenant in the Army in WWII and a few years later she met another man, Col. Huntington Sheldon, known as Ting, whom she would also marry impulsively, but with whom she would spend the rest of her life.

It wasn't until the age of 50 that Alice started writing science fiction. By the early 1970's, James Tiptree was unquestionably one of the brightest-burning talents in the world of science fiction. His fans included Ursula LeGuin, Joanna Russ and Phillip K. Dick. Tiptree's novella *The Girl Who was Plugged In* won the Hugo Award in 1974 and is considered the first true cyberpunk story. William Gibson cited it as inspiration for his seminal novel *Neuromancer*. Tiptree earned a second Hugo in 1977 for probably the most famous Tiptree work, "Houston, Houston, Do You Read?" Among many other accolades, in 2012 Alice was inducted into the Science Fiction Hall of Fame under the Tiptree name.

Most reviewers, editors and fans in the Science Fiction community found Tiptree's writing to be incredibly 'masculine'. When it was revealed in 1976 that Tiptree was, in fact, a woman, the science fiction community was shocked as it grappled with questions of what is masculine and feminine. Alice Sheldon became known as the world's greatest "literary tricksters". In 1987 Alice carried out a suicide pact that she had made with her husband in 1979.

Welcome to the Son of Semele Theater!

At Son of Semele, we are committed to the artistic sustainability of the greater community. Our resident company, Son of Semele Ensemble, produces three productions each year. In addition, Son of Semele presents the annual Solo and Company Creation Festivals, and welcomes a variety of guest productions by like-minded theater artists through our Guest Productions program. For more information on Son of Semele programming, please visit our website.

SONOFSEMELE.ORG

CAST



Kamar Elliott (Ensemble) is an LA based Artist. He received his bachelor degree from the University at Albany in NY. Recently, he has performed in Shakespeare's *Twelfth Night* at Coeurage Theatre Company, *MacBeth* and *Romeo and Juliet* with The Vagrancy at The LA Shakespeare Theatre. He also performed in the first ever Home-ward LA charity event as George. He is very excited to be a part of Son of Semele's *The Woman who Went to Space as a Man* and would like to thank his family and friends for their unwavering support.



Anneliese Euler (Mary Bradley) has performed and/or created with Comedy Central, Meredith Monk, Leonix Movement Theatre, Heidi Duckler, Cynthia Carle and Mark Nutter, Pig Iron, People's Light, and Philadelphia Shakespeare Theatre. She spent the noughties singing naughty songs as Brie Feingold-Africa (iTunes). She and Joe Schenck make short films as Doable Dance Theater (YouTube). Film: *Bright Day!* TV: *Days of Our Lives*. Liesel is a Son of Semele Ensemble member and is on the theater faculty at Rio Hondo College. |@lieselectric



James Ferrero (James Tiptree Jr) is an actor and producer in the LA area. Recent acting and producing credits include *WOLF* (Son of Semele Company Creation Festival) and *Narcissus & Echo* (Hollywood Fringe 2017). Other acting credits include *Romeo & Juliet* (Hollywood Fringe 2018) and *Richard II* (Chase What Flies). You can also hear him as Apollo on the podcast *Lesser Gods* which is now in development at HBO. He is a member of the Antaeus Theatre Company and a proud AEA member. For Mom and Gordon.



Emma Zakes Green (Tass) is a multi-disciplinary artist, writer, and director based in Los Angeles. She is committed to craft, explorative processes, and building community through creative collaboration. In any medium, Emma looks for innovative ways to tell stories that are compelling, human, and relevant. Recent projects include directing music video "Smells Like a Girl" for punk rock duo Lisa Frankly (featured in *Shoot Magazine's* New Director Showcase), developing new work with student playwrights at Occidental College, and writing and directing *MEAT: a bleak comedy* as a Son of Semele guest production. M.F.A. in Acting from CalArts.



Betsy Moore (Alice) won the award for best avant garde show at the United Solo Festival last year with *Freebird Goes to Mars*. Performance awards include the Garland Award for her work in *Dolores*, best performance from The International Amsterdam Film Festival for her work in *Sissy*, and best supporting actress for *Light as a Feather*. She is a proud member of Son of Semele Ensemble and excited to be a part of this unique, inspiring play.



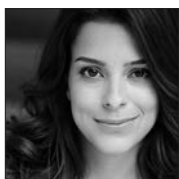
Nathan Nonhof (Ensemble) is a graduate of the CalArts MFA acting program and is very excited to work with such a commanding team on his second show with Son of Semele. His other recent performance venues include the Walt Disney Redcat Studio and The Independent Shakespeare Company. His mission is to never forget that our experience is a gift and we get to be part of something bigger than ourselves by encouraging growth, fostering joy, and binding through genuine connection. His favorite animal is the lofty Giraffe.



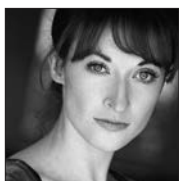
Robert Paterno (Ensemble) is a native Texan and performed in LA with Celebration Theatre, Company of Angels, Drive Theatre, Great River Shakespeare, Shakespeare Orange County, Sacred Fools Theatre, Speakeasy Society, Stagewest, Theatricum Botanicum, Hudson Theatre (*LA Weekly* Best Ensemble & Revival - *Last Days of Judas Iscariot*). TV/film work includes *Vampire Diaries* (recurring), *Vida* and *Days of Our Lives*. Teaching Artist with The Unusual Suspects and the Geffen Playhouse. Member, AEA. | www.robertpaterno.com | IG: [robert_paterno](https://www.instagram.com/robert_paterno)



Isabella Ramacciotti (Little Alice) is 12 years old and in 7th grade. She has acted in 14 plays in her community theater in El Segundo. Isabella has also done some commercials and modeling work with Paloma Model and Talent. She plays piano, and guitar, loves to sing, read, play volleyball and video games and spend time with friends and family. Isabella went on safari in South Africa last summer and had an adventure of a lifetime and it helps her connect to her character Little Alice. She hopes you thoroughly enjoy the show!



Paula Rebelo (Young Alice) is a Brazilian actress based in LA. Select credits include *The River Bride* (Arizona Theatre Company), *The Clean House* (Boise Contemporary Theater), Four Larks' *The Temptation of St. Antony* (Ovation Award Ensemble), *Prometheus Bound* (Getty Villa), and Theatre Movement Bazaar's *Big Shot* (South Coast Repertory, Bootleg Theater, tours to Scotland and China) and *Grail Project* (Bootleg Theater and Scotland). Rebelo is thrilled to be returning to Son of Semele since Sheila Callaghan's *That Pretty Pretty; or The Rape Play*. She holds a B.F.A. from CalArts. Member, AEA. Big thanks and kisses to BRB. | www.paularebelo.com



Megan Rippey (Mira) is a Baltimore-born, LA-based actor and performance artist whose most recent theatre credits include *Marie Antoinette* and *Red Velvet* (freeFall Theater, St. Petersburg), *Pussy Valley* (Mixed Blood Theatre, Minneapolis), *Rebirning* (Urbanite Theatre, Sarasota) and *4000 Miles* at Coachella Valley Repertory. Recent local theatre credits include *The Dryway* (Son of Semele), *Kentucky* (East West Players), *Rose Queen* (Ensemble Shakespeare Theatre), *Prometheus Bound* (Getty Villa), and the 2018 Ojai Playwrights Conference. BA from St. Mary's College of MD. MFA in Acting from CalArts. Proud AEA member. | [@meganrippy](https://www.instagram.com/meganrippy)



Ashley Steed (Janice) is a proud Son of Semele Ensemble member and also runs her own company, The Visceral City Project, which devises new works. Her immersive piece *When Skies Are Gray* was a Golden Key Award nominee at the Hollywood Fringe Festival. Recent credits include assistant directing *The House in Scarsdale* (Boston Court, performing in *The Ridiculous Darkness* and *The Offending Gesture* at Son of Semele, and devising/directing *Wonder City*. Ashley holds a BA in Theatre from USC and an MA in Theatre and Performance from Queen Mary, University of London. | www.ashleysteed.com



Alex Wells (Ting) has been a Son of Semele Ensemble member since 2004. He has appeared in numerous critically-acclaimed stage productions in Los Angeles. He won an *LA Weekly* Award for Best Male Comedy Performance for *Fatboy*. Previous Son of Semele Ensemble credits include: *Love and Information*, *Slaughter City*, *Melancholy Play*, *Our Class* and his one-man show, *A Very Short History of the Second World War* for the Solo Creation Festival. He is also a member of Classical Theatre Lab, where he recently appeared as Pinch in *The Country Wife*. He earned an MFA in Acting from Temple University. Member, AEA.

PRODUCTION TEAM

Maureen Huskey (Playwright/Director) writes and directs for theater and experimental performance. Her directing work has been presented in New York, Chicago, San Francisco, Vienna, Austria, Vancouver, Canada and Los Angeles at RedCat (*Exile of Petie DeLarge* by Jennifer Barclay) and Theater of Note (*Shoe Story* by Ben Snyder). She has also guest directed for Cal Arts (*A Splendid Death* adapted from Jean Genet), California State University at Long Beach (*As You Like It* by Shakespeare), and College of the Canyons (*Kill Me Deadly* by Bill Robens). She has received a Princess Grace Award, a Bessie Award, and shows she has directed have received NAACP and Ovation Award nominations. Her work in New York was awarded by the Creative Capital Foundation, Franklin Furnace and Voice & Vision's ENVISION for women theater artists (NYC), along with others. Huskey co-founded Red Dive, an award-winning vanguard company in the site-specific and immersive theater movement in NYC which she directed until 2006. She holds a Diploma in Drama with Merit from the University of Kent at Canterbury, England as a Rotary Scholar and an MFA in Theater Direction from the California Institute of the Arts.

Yuval Ron (Composer) is an internationally renowned World Music artist, composer, educator, peace activist and record producer. Among his many honors, he composed the songs and score for the Oscar winning film *West Bank Story* in 2007, received commissions for site-specific scores from the Getty Center, Japan-America Center, Lauren Bon and Farm Lab, choreographers Daniel Ezralow (American Repertory Ballet), Ashley Roland (ISO dance company), Oguri (Renzoku Dance Company) and Zen priest and visual artist, Hirokazu Kosaka. His awards include the Los Angeles Treasures Award in 2004 and prestigious grants from the National Endowment for the Arts, American Composers Forum, California Council for the Humanities and the Rockefeller Foundation. His TV and films scores include the PBS/Nova special, *Breaking the Maya Code*, *Proteus*, *Oliver Twist*, *The Spiral Staircase*, *Golda's Balcony* and *Road to Victory*, and he has collaborated with numerous film directors including, Jeremy Kagan, Ari Sandel, David Lebrun. His original scores for theater productions include Shakespeare's *The Tempest*, Yeats' *Amer's Jealousy* and Beckett's *Casscanda*. | yuvalronmusic.com

Richard An (Music Director) is a composer and performer, born and raised in Los Angeles. Richard has composed music for the Los Angeles Philharmonic, recently participated in the Yarn/Wire Summer Institute, conducted and led the USC Concerto Chamber Orchestra and USC Kazan Taiko, and has performed with The Rolling Stones, Barry Manilow, and Jeffrey Kahane with the Los Angeles Chamber Orchestra, performing mostly as pianist, conductor, vocalist, and percussionist. Richard is currently an MFA student at the California Institute of the Arts. | richardanmusic.com

Martín Carrillo (Sound Designer) has been twice Ovation awarded for *Paradise Lost: Shadows and Wings*, (2007) as well as *Romeo and Juliet: Antebellum New Orleans 1836*, (2004), Theatre @ Boston Court. 2012 *LA Weekly* award for Jacqueline Wright's *Have You Seen Alice*. His work has been featured at Theatre of Note, South Coast Repertory, Tokyo Disney Seas, The Broad Museum, and The Marciano Art Foundation among many other esteemed venues. | heardrum.org

Ashphord Jacoway (Assistant Costume Designer) is excited assist Lena Sands. Before graduating from VCU in 2010 with a BFA in Theatre: Performance, Ashphord took multiple pattern making, draping, and costume construction classes during her senior year. Ashphord is a Stage Raw Nominee for Best Costume Design (*Paradise Lost*, Not Man Apart Physical Theatre Company), and her credits include Watson's *Go To Birmingham-1963*, *Two Mile Hollow*, and *The Music Man*. Her mission is to create dialogue through theatre.

Edgar Landa (Fight Director) is a Los Angeles-based actor/director. He also creates fights and violence for theatres large and small. Credits include: South Coast Rep, San

Diego Rep, The Geffen Playhouse, CTG/Kirk Douglas Theatre, Florida Studio Theatre, and Shakespeare & Company. Edgar serves on the faculty of the University of Southern California School of Dramatic Arts and is a long-time collaborator of Son of Semele Ensemble (Los Angeles). He is an AEA member and Pro99 supporter of intimate theatre in Los Angeles. | edgarlanda.com

Mary Losurdo-Holt (Stage Manager) is a LA-based stage manager and director. She graduated from Wells College in 2014 with a BFA in Theatre & Dance. Most recently, she directed *Extremities* at the Sidewalk Studio Theatre. Her stage management credits include *The Mountaintop* (ASM), *Jay&E&The Zig Zag Sea* (Kaiser Permanente Educational Theatre), and *Bone Woman*. Mary is so excited to be back at Son of Semele Ensemble after previously stage-managing *Of Government*.

Rose Malone (Lighting Designer) received an MFA in Lighting Design from CalArts. Some recent productions include *Amos and Boris* at South Coast Rep, *An Undivided Heart* at Echo Theatre, and *With Love and a Major Organ* at Boston Court. Additionally she has designed at the Edinburgh Fringe Festival and assisted with Deaf West Theatre's production of *Spring Awakening* on Broadway.

Flor San Roman (Dramaturg) is a nerd and a geek and was overjoyed to have an excuse to investigate one (two?) of the most remarkable personalities in science fiction and to read a bunch of classic sci-fi. Previous dramaturgical efforts include *The Ridiculous Darkness*, *Of Government* and *Civilization (All You Can Eat)*. Flor has also stage managed a half dozen Son of Semele Ensemble productions. Outside theatre Flor is a voice actor | florsanroman.com/voiceover

Lena Sands (Costume Designer) is a costume designer, puppet artist and scenographer for live performance, installation and film. Her work supports the unsettling of dramatic space and the wringing out of shared cultural routines. Favorite designs include: *Bacchae* with SITI company (The Getty Villa, BAM) *AMERYKA* (CMPG, ovation nomination); *Cuckoo's Nest* (After Hours, Stage Raw nomination); *Untitled Communion*, *Substrata* (REDCAT); *Next to Normal*, *Kentucky* (East West Players); *The Bumps* (Skirball, BBC Documentary) and *Ghost Town* (Cornerstone).

Eli Smith (Set Designer) is an activist, visual artist and performance designer. She received her bachelor's degree in Physics from SUNY Geneseo and MFA degrees from CalArts in both Performance Design and Art & Technology. Recent productions include Lew Klahr's experimental film *Hearse*, Edgar Arceneaux's performance art piece *Until, Until, Until*, and Nataki Garrett's devised work *The Carolyn Bryant Project*. Her video installation *A Continuous Thread* appeared at The Box gallery in June of 2018. | elismith.xyz

Matthew McCray (Artistic Director, Son of Semele Ensemble) has directed productions, concerts and workshops for Center Theatre Group, LA Philharmonic, South Coast Rep (StudioSCR), Santa Clarita PAC, Museique, Deaf West, Chance Theater, Rogue Machine, Son of Semele, Odyssey, among others. Recipient of LA Drama Critics Circle Award and nominations from Stage Raw, *LA Weekly*, Ovation Awards and others. President of the Theatrical Producers League of Los Angeles. Member: SDC, AEA & SAG/AFTRA. | [@matthewmccray](https://twitter.com/matthewmccray) | matthewmccray.com

SPECIAL THANKS

Michael Childers, Joe Herrera, Sean Michael Lewis, Jacob St. Aubin, Hazel Lozano, Kinetic Lighting, Susan Gordon, Julie Phillips, Sheryl Vint, Melissa Saywell and Jeff Hicks.



BOLDIMAGINATIVEINTIMATE

WE ARE a Los Angeles-based ensemble theatre company that believes the impact of a theatrical experience should resonate beyond the theater door. As an ensemble of artists, we integrate complex design and performance, producing theatre that embraces the friction between emotion and intellect. Through a process of discovery, collaboration and creative risk-taking, we illuminate and amplify universal questions. To that end, we make an earnest commitment to the artistic sustainability of the greater community.

In 2004, we were profiled in *American Theatre* as one of the nation's up-and-coming young theatre companies. Since our beginnings in 2000, we have been honored with two LA Stage Alliance Ovation Awards (nine nominations), five LA Weekly Theatre Awards (eleven nominations), five Stage Raw nominations, four Los Angeles Drama Critics Circle Awards, a SAGE Award and an NAACP Theatre Award (four nominations).

ENSEMBLE MEMBERS

Melina Bielefelt
Don Boughton
Liesel Euler
Erith Jaffe-Berg
Barbara Kallir
Edgar Landa
Matthew McCray
Betsy Moore

Kate Motzenbacker
Michael Nehring
Ashley Regan
Flor San Roman
Sarah Rosenberg
Ashley Steed
Brenda Varda
Dan Via
Alex Wells

ASSOCIATE MEMBERS

Molly Connor, Caroline Haydon,
Mark Hein, Jetta Juriansz,
Scott Kuza, Elizabeth Lanier,
Hazel Lozano, Debba Rofheart,
Jinny Ryann, Harim Sanchez
& Kristi Schultz

STAFF

Matthew McCray *Producing Artistic Director*
Dan Via *Marketing Director*
Ashley Steed *Social Media Manager & Festival Producer*
Kate Motzenbacker *Festival Producer*
Liesel Euler *Membership Director*
Barbara Kallir *Literary Manager*
Alex Wells *Volunteers Director*

BOARD OF DIRECTORS

Pamela Ezell
Matthew Larsen
Matthew McCray, *chairman*
Michael Nehring

JOIN US!

Do you like what you see here? Want to become a Son of Semele Ensemble company member? Or a company volunteer? There is information about company membership on our website in the "Ensemble" link. To join our volunteer team, email info@sonofsemele.org.

SONOFSEMELE.ORG

THANK YOU TO OUR DONORS

Son of Semele Ensemble couldn't continue our work without these tremendous supporters. Son of Semele is a 501(c)3 organization. Your donations are tax-deductible to the extent allowed by law. Currently 40% of our budget relies on donations. We hope you'll consider a donation, which will help us bring fantastic productions to fruition and continue providing outside artists with opportunities to create.

DIONYSUS CIRCLE (\$2,500+)

City of Los Angeles, Department of Cultural Affairs & Los Angeles County Arts Commission

SEMELE CIRCLE (\$1,000 - \$2,400)

Matthew McCray, Brad Smith & Myron Yeager, Sara Vagliano

ZEUS CIRCLE (\$500 - \$999)

John Kallir, Bruce Katzman, Finlay McAree, Michael Nehring, Doris Syme

DEITY CIRCLE (\$250 - \$499)

Ashley Adams-Regan, Don & Diane Boughton, Ellen Cockrill & Doug Post, Erith Jaffe-Berg, Terry Jones & Adan Garcia, Drew Katzman, Mary Kiene, Myron Meisel, Monica P. Moore, Katherine Motzenbacher, Rohini Talalla, Jeanine Uribe, Alexander Wells

PROPHET CIRCLE (\$100 - \$249)

Julie M. Anderson, Hildegard Bachert, Linda Burstyn, Melvin Byrd, Megan Campbell, Gary Cosimini, Ann Bronston & John Flynn, Peter Garrison, Danny Getzoff, Jane Kallir, Edgar Landa, Steve & Debra Lemon, Win May, Charles Petit, Hollister Rand, Heather Rim, Diane Sabatini, Flor V. San Roman, Steven A. Scott, Tom Shima, Daniel Shoenman, ShaniQua Steinberg, Clare Payne Symmons, Megan Wahlquist, Stephanie Webster, Gabe Wolosky, Paul Wong, Tomm Wells & Buddy

MORTAL CIRCLE (up to \$99)

Many wonderful people!

Thank you!

STAY IN THE KNOW!



Please join our e-mail list at the box office so we can keep you informed about upcoming productions, news and discounts. You can also like our Facebook page (facebook.com/sonofsemele) and follow us on Twitter (@sonofsemele).

SON OF SEMELE

3301 Beverly Boulevard, Los Angeles, CA 90004

Web: www.sonofsemele.org | **Facebook:** /sonofsemele | **Twitter:** @sonofsemele

Son of Semele is a member of LA Stage Alliance and the Theatrical Producers League of Los Angeles

